



# GAT MONTHLY MEMBERSHIP PROGRESS REPORT

Results as of: 6/30/2023

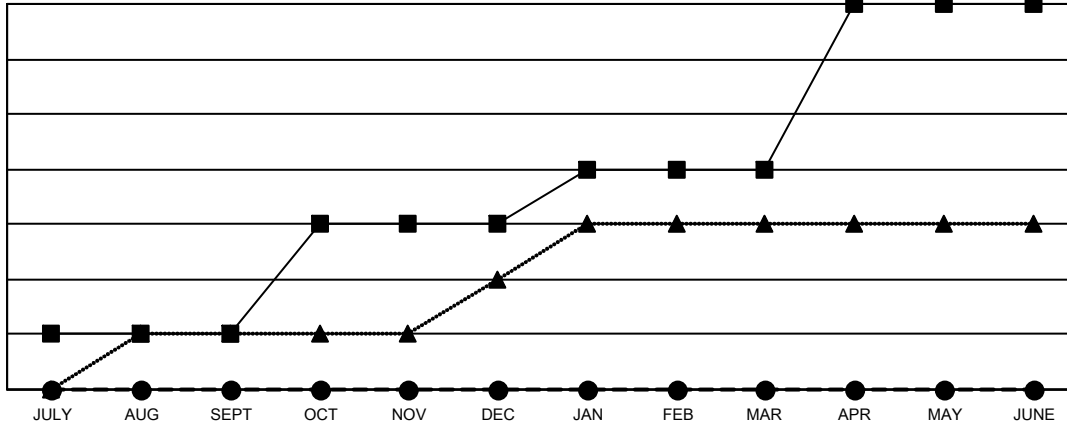
Multiple District 12

LOCATION: TENNESSEE

Clubs			
RESULTS FOR 2022-2023			
QUARTER	NEW CLUB GOAL	NEW CLUBS	DROPPED CLUBS
JULY/AUG/SEPT	1	0	0
OCT/NOV/DEC	2	0	2
JAN/FEB/MAR	1	0	3
APR/MAY/JUNE	3	0	3

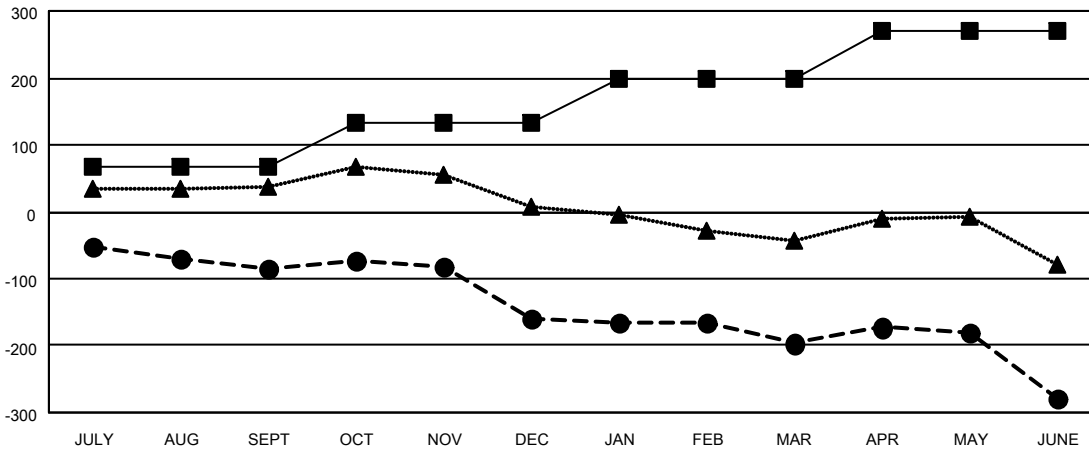
Members			
RESULTS FOR 2022-2023			
QUARTER	MEMBER GROWTH NET GOAL	MEMBER GROWTH ACTUAL	DROPPED MEMBERS ACTUAL (including transfers)
JULY/AUG/SEPT	66	75	152
OCT/NOV/DEC	66	115	176
JAN/FEB/MAR	67	106	132
APR/MAY/JUNE	71	117	185

GOALS AND ACTUAL NEW CLUBS CUMULATIVE



- CURRENT YEAR GOALS FOR NEW CLUBS
- CURRENT YEAR ACTUAL NEW CLUBS
- ▲- LAST YEAR ACTUAL NEW CLUBS

GOALS AND ACTUAL MEMBERS CUMULATIVE



- MEMBER GROWTH NET GOAL
- MEMBER GROWTH ACTUAL
- ▲- LAST YEAR MEMBERSHIP ACTUAL

<b>DROPPED CLUBS: 8</b>	97 CLUBS OF 195 ADDED 1 OR MORE NEW MEMBERS	<b>GENDER DISTRIBUTION</b>
<b>DROPPED MEMBERS</b>	<a href="#">CLICK HERE FOR CUMULATIVE MEMBERSHIP DATA</a>	MALE 2,352 (60.02%)
DECEASED 76		FEMALE 1,567 (39.98%)
CLUB CANCELLED 30		NON BINARY 0 (0.00%)
OTHER 539		PREFER NOT TO ANSWER 0 (0.00%)
<b>TOTAL 645</b>		<b>TOTAL FAMILY UNIT MEMBERS 867</b>
		<b>FAMILY MEMBERS PAYING HALF DUES 442</b>